

Samson Book/Utility Carts...

Structural Design

Compared to ordinary "Box" designed book/utility carts, **Samson** uses I-Beam design to lighten it's load, improving capacity especially in narrow aisles.

Sustainable Green Design



Recyclable Parts

Does not deplete natural resources & reduced energy to produce!

Expandability

From zero shelves to a single-sided shelf cart...to a double sided cart. Hinged doors & shelves flip open and lock in place without tools or assembly.



Heavy Duty Support

Designed for 40 pounds per square foot, **Samson** easily handles 125 pounds per shelf.



Reinforced Construction

Built for years of rugged use, the **Samson Cart** is made of reinforced high density polypropylene plastic. The cart never needs painting, it's rust proof and easy to clean.

Safety Design

Rounded corners and edges greatly reduces potential for injury to people and facilities.



Durable Wheels

Samson's agility is due to the use of 4" wheels. 5" wheels are also available. Optional locking wheels available in both sizes.



Item No.	Description	Closed Dimensions	Open Dimensions
SC001	6-Shelf Book/Utility Cart	42"w x 12 1/2"d x 51"h	42"w x 25"d x 51"h

Samson Book/Utility Carts... 3, 6 or Zero Shelves

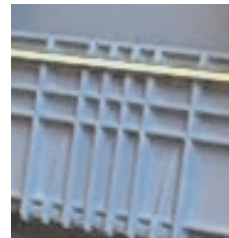
Innovative...Saves Time, Money and Space.

Introducing the **Samson Book/Utility Cart**. The first collapsible, two-in-one cart engineered to adapt to the work environment. Flip the doors open, lower the shelves and you have a 3 shelf cart to fit into narrow spaces. Flip open the second side and you now have 6 shelves to store, display or transport goods. Collapse the shelves and roll into a closet or behind a counter...

Samson Carts are only 12¹/₂ inches deep, reducing storage needs.



* Ergonomic Lift



* Structural Plastic



Options

- 5" Locking Wheels
- 6-Pack Bungee Cords
- Cargo Net 375 LB. test.



Illinois Movers' and
Warehousemen's Association



www.samsoncarts.com

© ICB, LLC 2003

U.S. Patents 6,457,737 B1; 6,540,249 B2 International Patents Pending

847 818.8977